

EGFR (G719S)

Catalog Number: 26083

Gene Symbol: EGFR/HER1/ERBB1

Description: Anti-EGFR (G719S) Mouse Monoclonal Antibody

Background: EGFR is a receptor tyrosine kinase binding ligands of the EGF family and activating several signaling cascades to convert extracellular cues into appropriate cellular responses. It activates at least 4 major downstream signaling cascades including the RAS-RAF-MEK-ERK, PI3 kinase-AKT, PLCgamma-PKC and STATs modules. Defects in EGFR are associated with lung cancer (LNCR).

Immunogen: A synthetic peptide from the internal region of EGFR which includes the mutation of G719S, human origin.

Tested applications: ELISA, WB, IF, IHC

Recommended dilutions:

ELISA: 1:1000-1:5000

WB: 1:1000-1:2000

IHC: 1:50-1:100

Concentration: 1 mg/ml

Host: Mouse

Clonality: Monoclonal

Purity: Purified from ascites

Format: Liquid

Storage buffer:

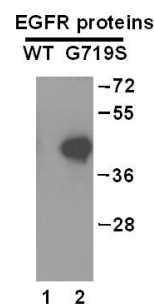
Preservative: no

Constituents: PBS (without Mg^{2+} and Ca^{2+}), pH 7.4, 150 mM NaCl, 50% glycerol

Species Reactivity: Recognizes EGFR (G719S), but not wild type EGFR of vertebrates.

Storage Conditions: Store at $-20^{\circ}C$. Avoid freeze / thaw cycles.

Western blot:

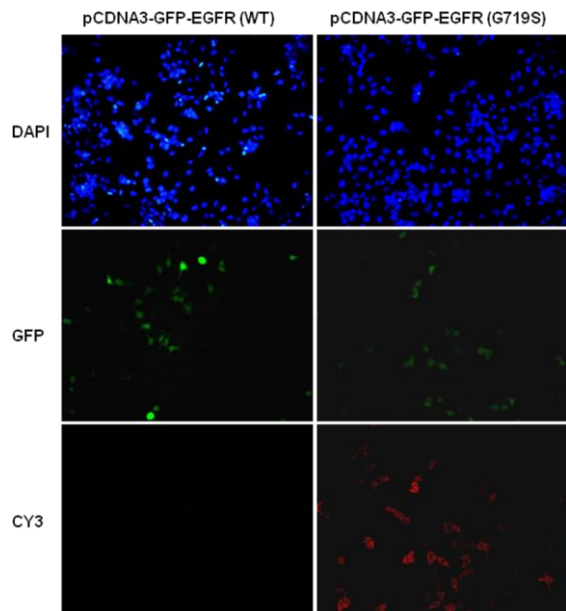


WB: Anti-EGFR(G719S) mAb

Western blot analysis of recombinant

EGFR(G719S) and wildtype proteins. Purified His-tagged EGFR(G719S) protein(702-987) (Cat.#10214) and wildtype protein(702-987) (Cat.#10210) were blotted with anti- EGFR (G719S) mouse antibody(Cat.# 26083).

Immunofluorescence:



Immunofluorescence of cells expressing EGFR proteins with anti-EGFR (G719S) antibody.

HEK293T cells were transfected with pCDNA3-GFP-EGFR (WT) plasmid (left column) or pCDNA3-GFP-EGFR (G719S) plasmid (right column), then fixed and stained with anti-EGFR (G719S) monoclonal antibody (Cat. # 26083).